

LEASE
Former Bank Branch

MONTGOMERY SQUARE

Routes 309 and 202 at Knapp Road - Montgomeryville, PA

- Former bank branch of approximately 3,000 sf on two floors with two (2) drive-through lanes.
- Shopping center of 394,991 sf anchored by Target, Giant and Barnes & Noble.
- Parking for 1,247 cars.
- Strategically located at the intersection of Routes 309 and 202 just south of the Montgomery Mall. Easily accessible to the Fort Washington interchange of the Pennsylvania Turnpike (I-276) and Doylestown and Norristown/King of Prussia via the Route 202 Bypass.



Map not to scale

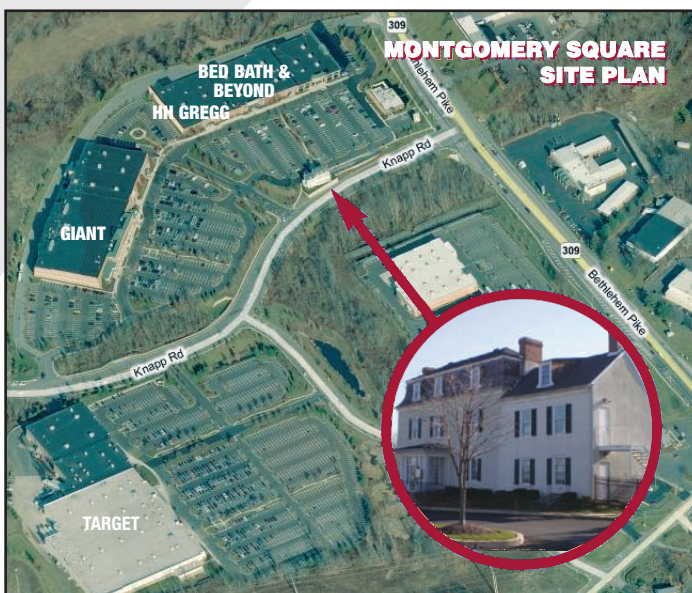


Commercial Real Estate Services

275 Commerce Drive • Suite 104
Fort Washington, PA 19034

215-886-9400

www.situsproperties.com



The foregoing information was furnished to us by sources which we deem to be reliable, but no warranty or representation is made as to the accuracy thereof. Subject to correction of errors, omissions, change of price, prior sale or withdrawal from market without notice.