

RYDAL EXECUTIVE PLAZA



1095 RYDAL ROAD, RYDAL, PA



CONFERENCE

- Modern office building containing approximately 28,500 square feet on 1.7 acres.
- Up to 16,000 square feet available for immediate occupancy on the first and second floors.
- Macadam illuminated parking for 127 cars.
- 36 built-in workstations on the second floor.



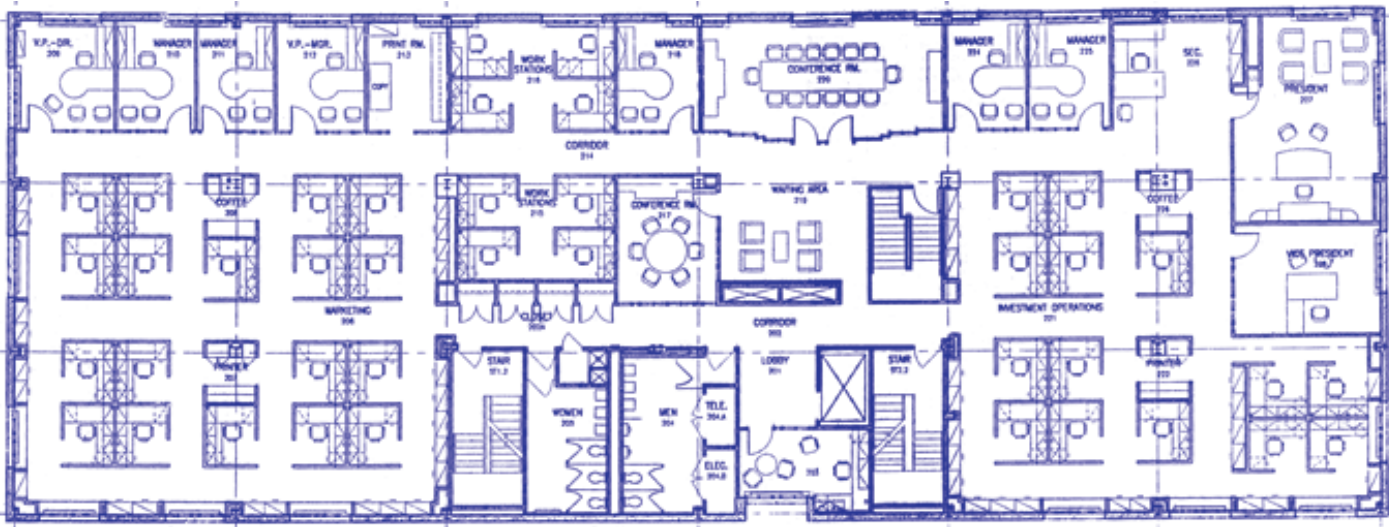
LOBBY

- Upgraded finishes throughout.
- Card access system.
- Building exterior storage.

First Floor



Second Floor



Commercial Real Estate Services
500 Old York Road • Suite 110
Jenkintown, PA 19046
215.886.9400 • Fax 215.885.6563

- Located just off Old York Road (Route 611) with access to shopping, numerous restaurants and services business.
- SEPTA (R-3 West Trenton) Commuter Rail Service at the Rydal Station adjacent to Rydal Executive Plaza.
- Within ten (10) minutes of the Pennsylvania Turnpike (I-276) Willow Grove Exit.